



GIA
GEMOLOGICAL INSTITUTE OF AMERICA®

New York Laboratory Headquarters
580 Fifth Avenue | New York, NY 10036-4794
T: 212-221-5858 | F: 212-575-3095

Carlsbad
5355 Armada Drive | Carlsbad, CA 92008-4699
T: 760-603-4500 | F: 760-603-1814
www.gia.edu

COLORED DIAMOND GRADING REPORT

GIA REPORT 13777965

August 16, 2007
Shape and Cutting Style **Cut-Cornered
Rectangular Modified Brilliant**
Measurements 5.48 x 5.18 x 3.67 mm

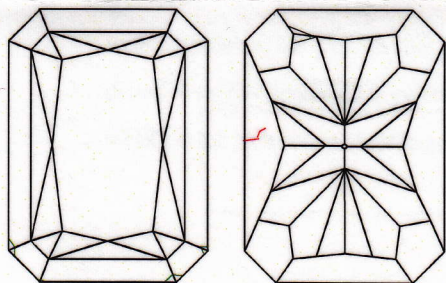
GRADING RESULTS

Carat Weight **1.01 carat**
Color **NATURAL**
Origin **NATURAL**
Grade **FANCY
YELLOW**
Distribution **Even**
Clarity Grade **VS2**

ADDITIONAL GRADING INFORMATION

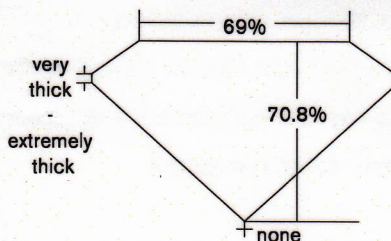
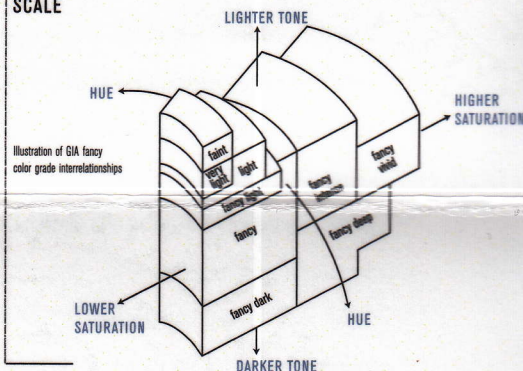
Finish
Polish **Good**
Symmetry **Good**
Fluorescence **Faint**
Comments:
Surface graining is not shown.

REFERENCE DIAGRAMS



GIA CLARITY SCALE	
FLAWLESS	VERY VERY SLIGHTLY INCLUDED
INTERNALLY FLAWLESS	
VVS ₁	VERY SLIGHTLY INCLUDED
VVS ₂	
VS ₁	SLIGHTLY INCLUDED
VS ₂	
SI ₁	INCLUDED
SI ₂	
I ₁	
I ₂	INCLUDED
I ₃	

GIA COLORED DIAMOND SCALE



Profile not to actual proportions.

KEY TO SYMBOLS

- ~ Feather
- ^ Natural
- ▲ Extra Facet

Red symbols denote internal characteristics (inclusions). Green or black symbols denote external characteristics (blemishes). Diagram is an approximate representation of the diamond, and symbols shown indicate type, position, and approximate size of clarity characteristics. All clarity characteristics may not be shown. Details of finish are not shown.

This Report is not a guarantee, valuation or appraisal and contains only the characteristics of the diamond described herein after it has been graded, tested, examined and analyzed by the GIA Laboratory and/or has been inscribed using the techniques and equipment used by the GIA Laboratory at the time of the examination and/or inscription. Inscriptions reported in this document are not a guarantee, validation, or warranty of an article's quality, country of origin or source; or that the article will be identifiable by the inscription in the future (since inscriptions can be removed). GIA makes no representation concerning any trademark, word, or symbol which is inscribed by GIA or which is identified on this Report. The recipient of this Report may wish to consult a credentialed jeweler or gemologist about the information contained herein.



The security features in this document, including the hologram, security screen and microprint lines, in addition to those not listed, exceed document security industry guidelines.

IMPORTANT LIMITATIONS ON BACK
©2007 GEMOLOGICAL INSTITUTE OF AMERICA, INC.